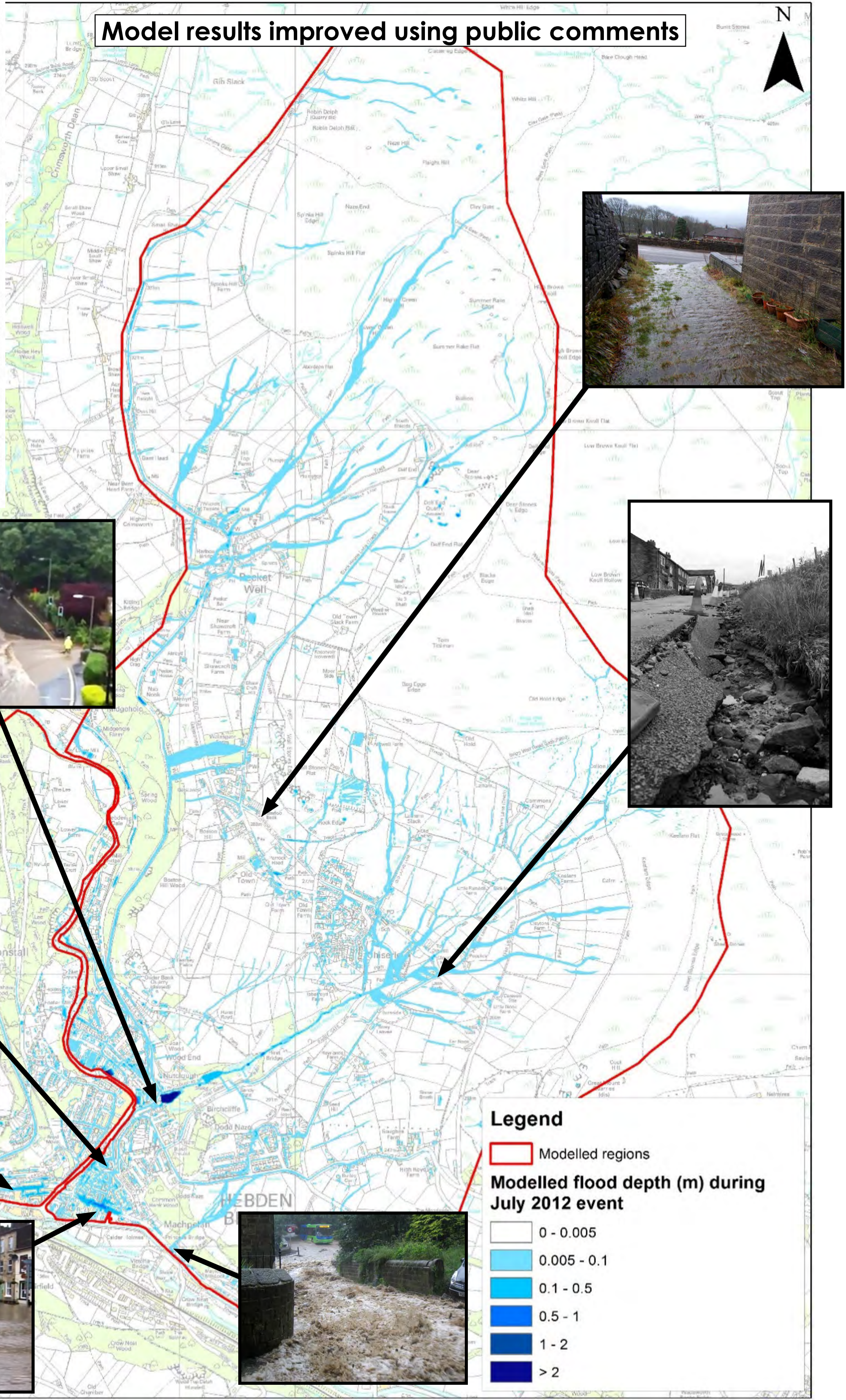
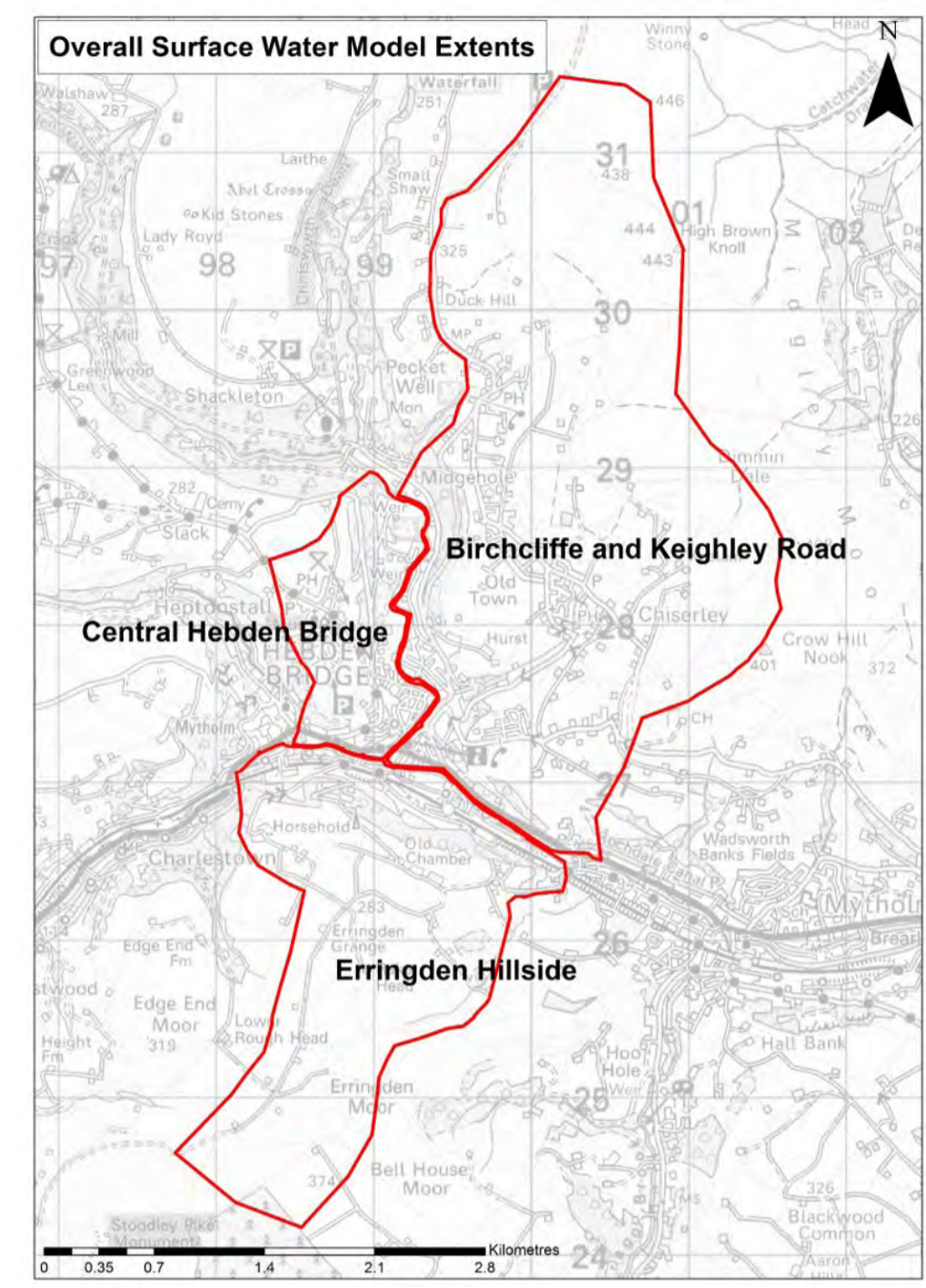
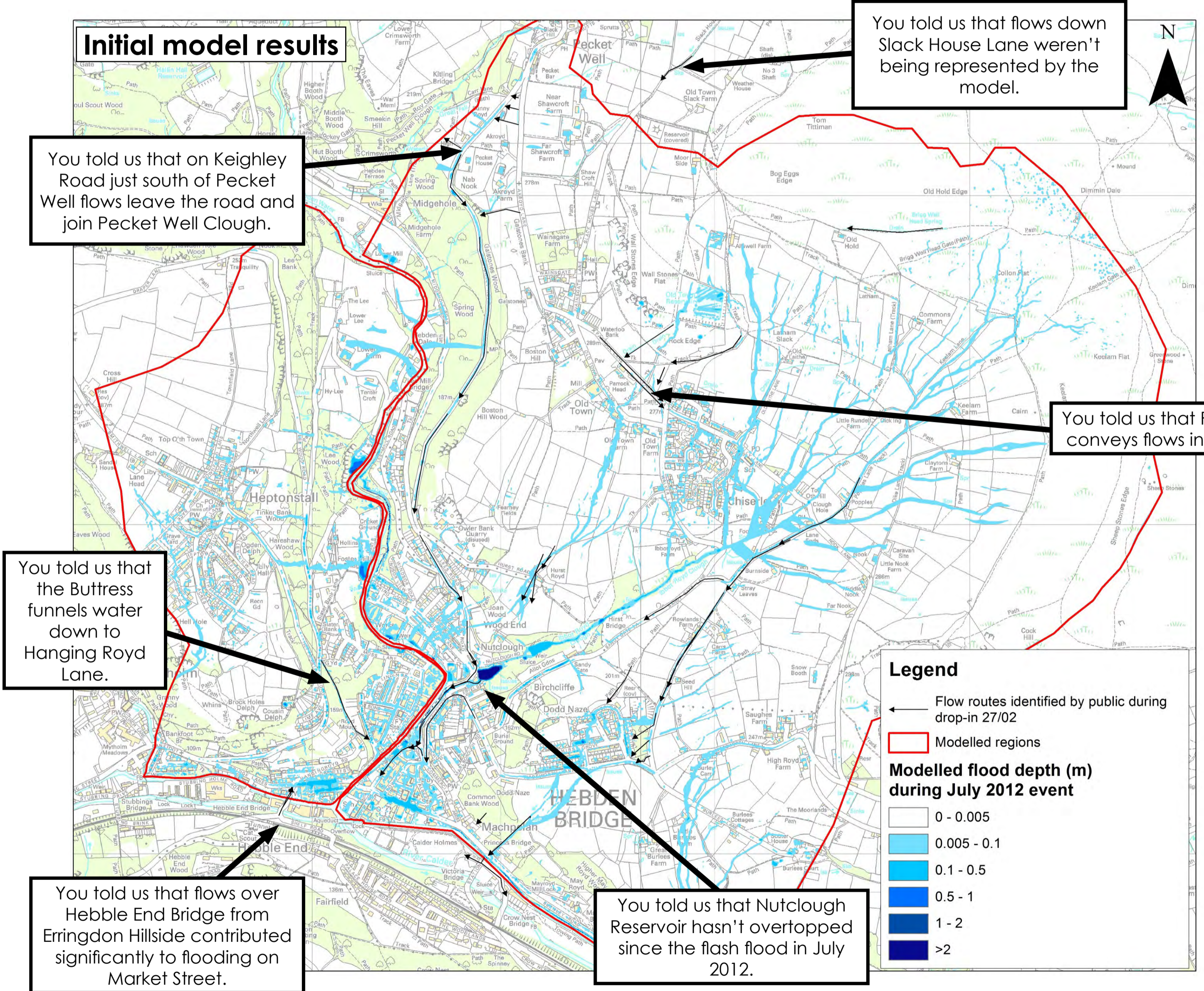


Surface water flood risk investigation

The town sits in a steep sided valley – heavy rainfall events cause uncontrolled overland flow which travels quickly down roads, over fields and through properties to the centre of Hebden Bridge where it becomes trapped on Market Street and New Road.

We have developed models to identify overland flow routes and key surface water flooding locations in Hebden Bridge and surrounding areas.



We used known recent flood events to test the models. To assist with this a public drop-in event fed into the model development. We gathered information from the public to build up the picture of what happens in real life and check that our model reliably reflects this. This was vital to increase confidence in the models.

You told us your experiences of flooding in the area and provided us with photographic evidence. Since then, we have taken your comments on board and improved our model representation. Here you can see the results we presented in February with some of your comments. On the right you can see the results from our updated model.