

### Environmental Constraints - Hebden Bridge

We have undertaken a wide range of environmental assessments to consider where environmental factors may limit the proposed flood management options. We use this information to inform the design process and ensure the final design is as environmentally friendly as possible.

**Birds** – The vegetation and trees along the river provide potential habitat for breeding and nesting birds.

**Otters** – The river provides potential habitat for commuting and foraging otters.

**Bats** – The bridges, trees and buildings within Hebden Bridge provide potential habitat for roosting or foraging bats.

**Surveys undertaken:**

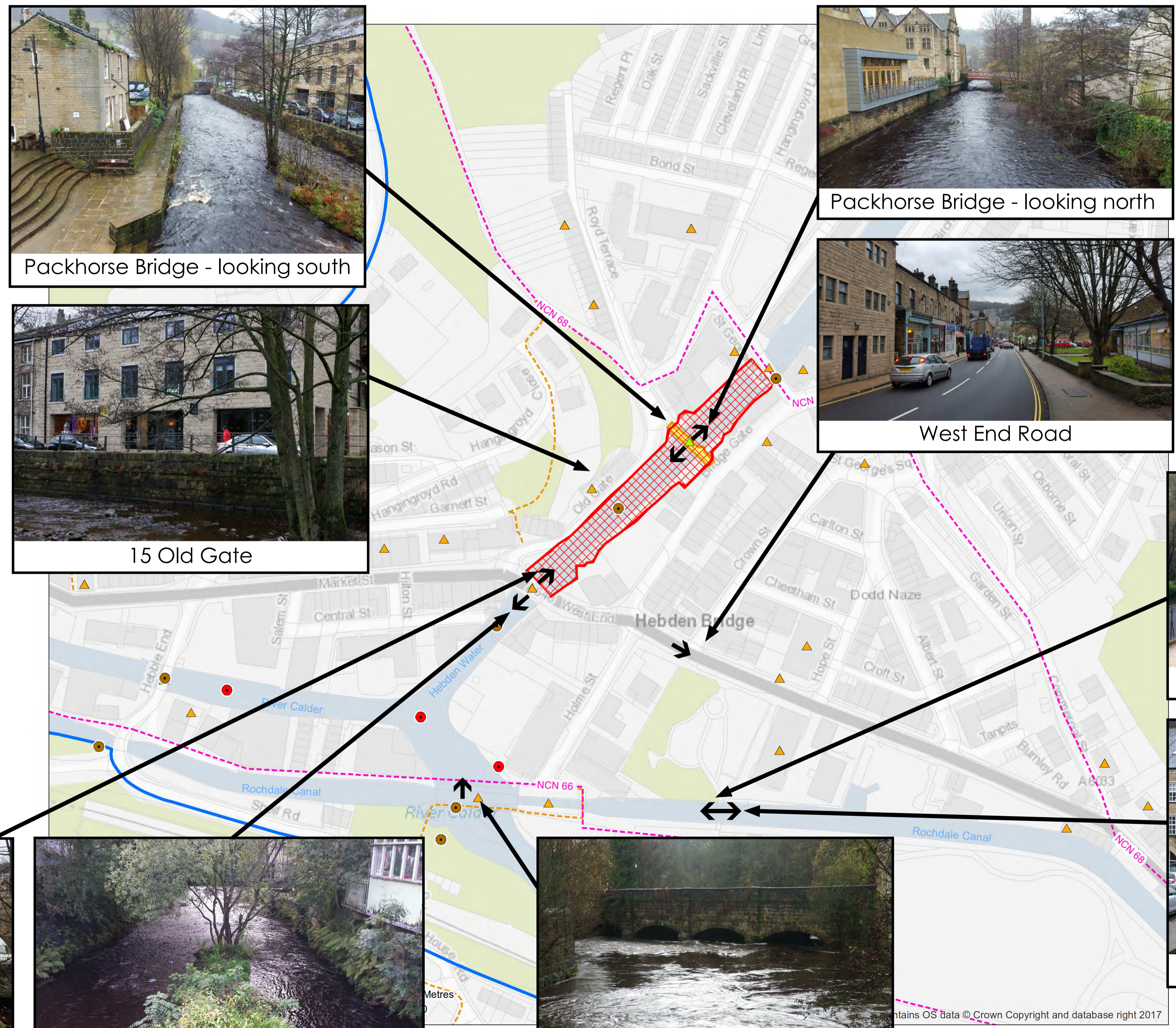
- Landscape;
- Historic conservation;
- Ecological Walkover.

**Future Surveys:**

- Ecological survey (River corridor and river habitats);
- Structural surveys and inspection for bats.

Hebden Bridge Conservation Area has been designated for its special architectural or historic interest. The key characteristics of the area include:

- 18TH century dwellings;
- Origins as a river crossing and related packhorse routes; and
- Commercial Victorian town centre.



**Legend**

- Main area of works (indicative location)
- ↑ Key landscape view
- ▲ Grade II\* listed building
- ▲ Grade II listed building
- Scheduled monument
- ▭ Hebden Bridge Conservation
- Invasive species
- Bat roost potential
- - - National Cycle Network (NCN) route
- - - Public right of way - footpath



Packhorse Bridge - looking south



Packhorse Bridge - looking north



15 Old Gate



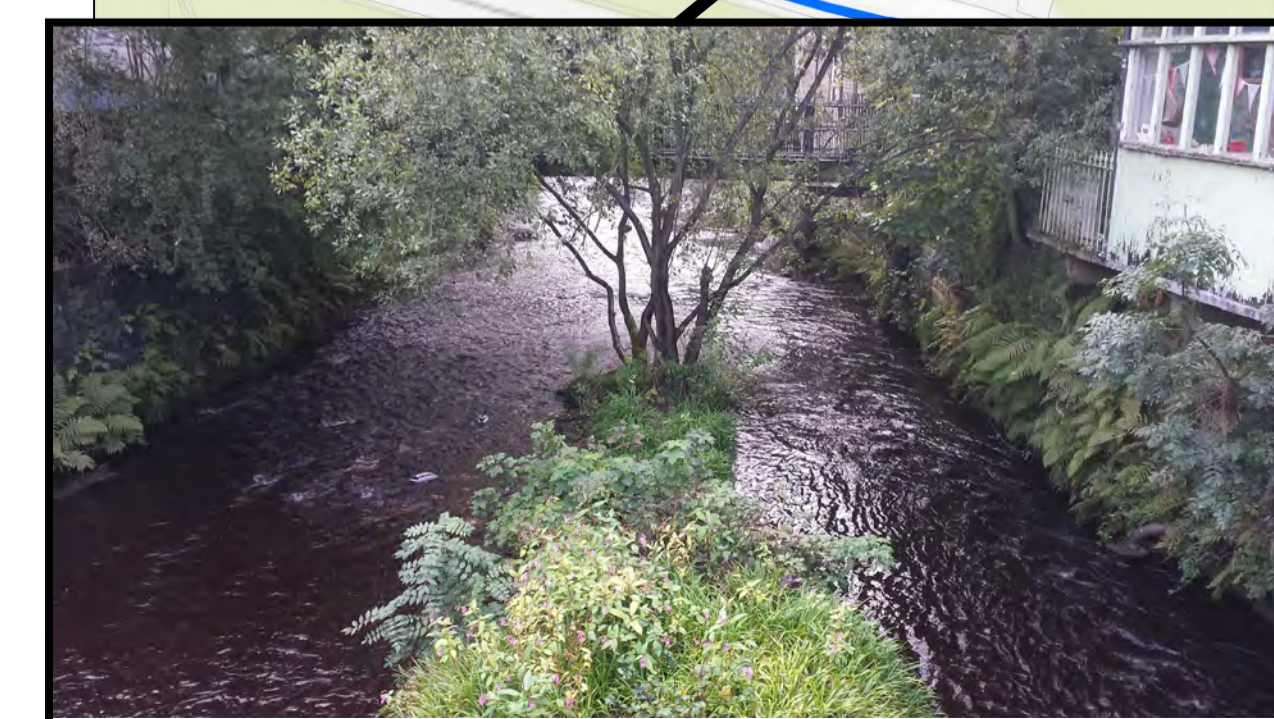
West End Road



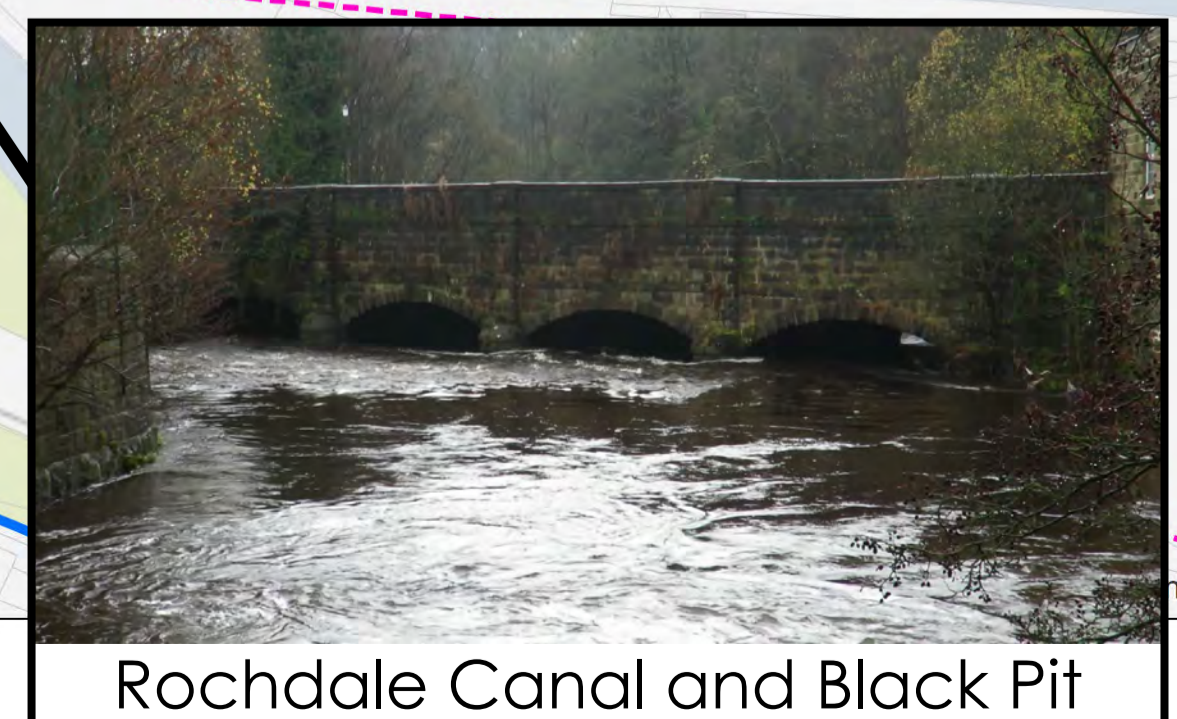
Rochdale Canal - looking west



New Road Bridge - looking north



New Road Bridge - looking south



Rochdale Canal and Black Pit Aqueduct



Rochdale Canal - looking east

Contains OS data © Crown Copyright and database right 2017